



---

# Comparing TRT L2 alignment using TRT-Only tracks and Combined tracks

John Alison  
Andrea Bocci

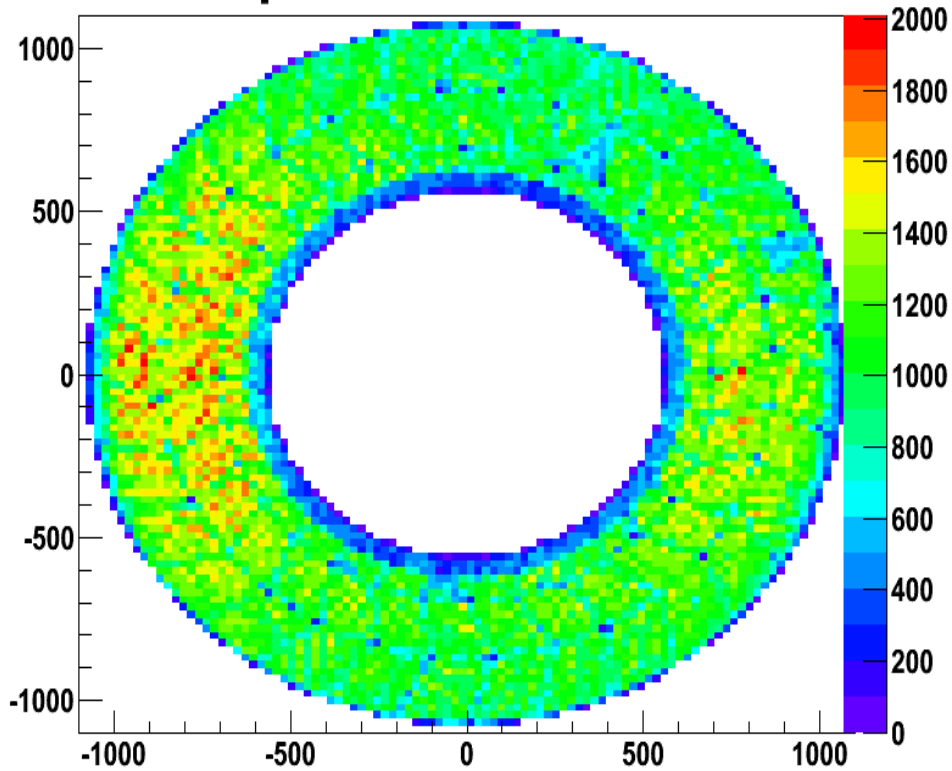


# Hits on tracks used in L2 alignment

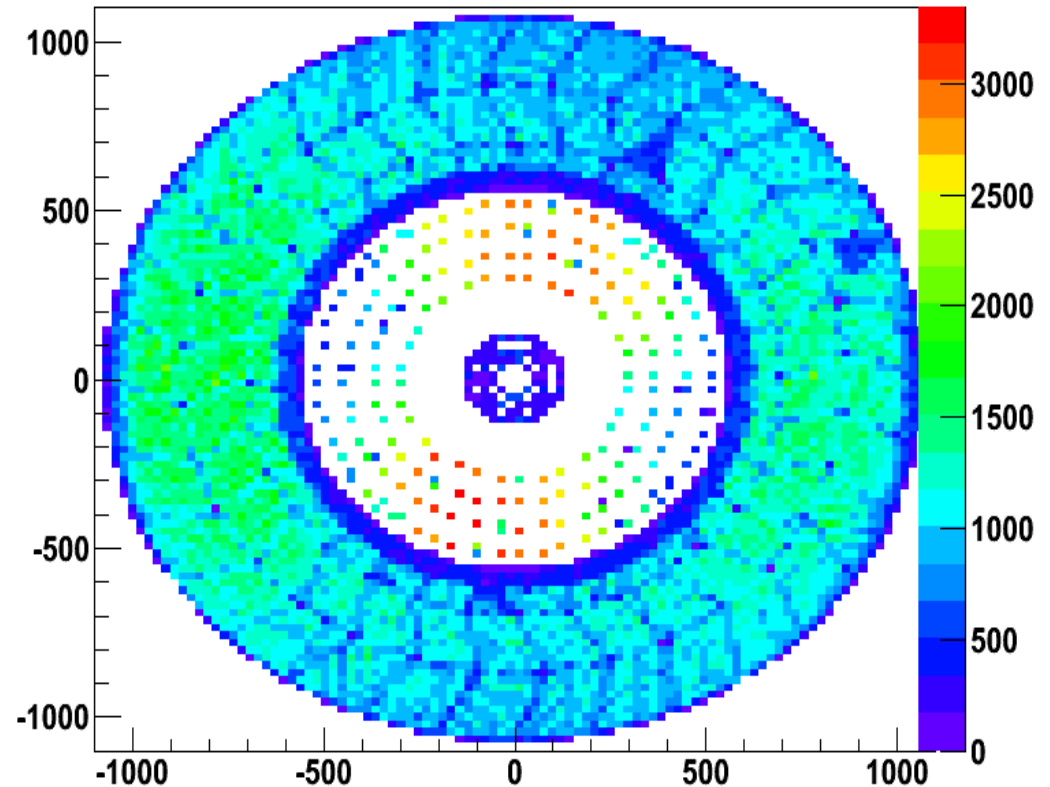
## TRT Only

## Combined

### Hit Map for Barrel



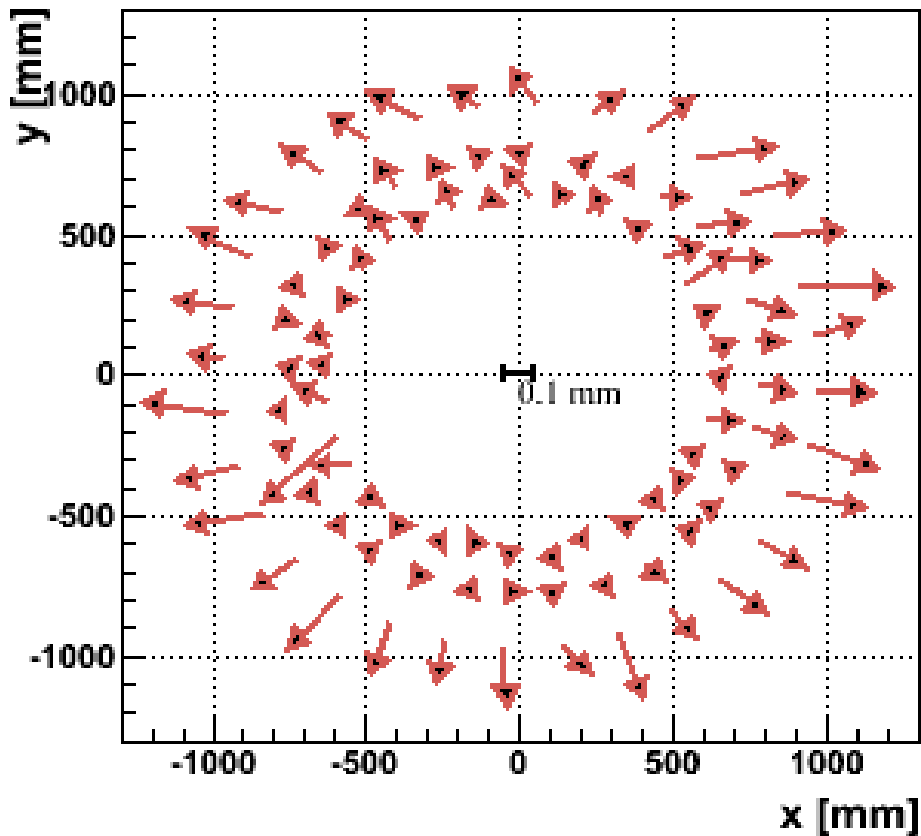
### Hit Map for Barrel



# Alignment Parameters

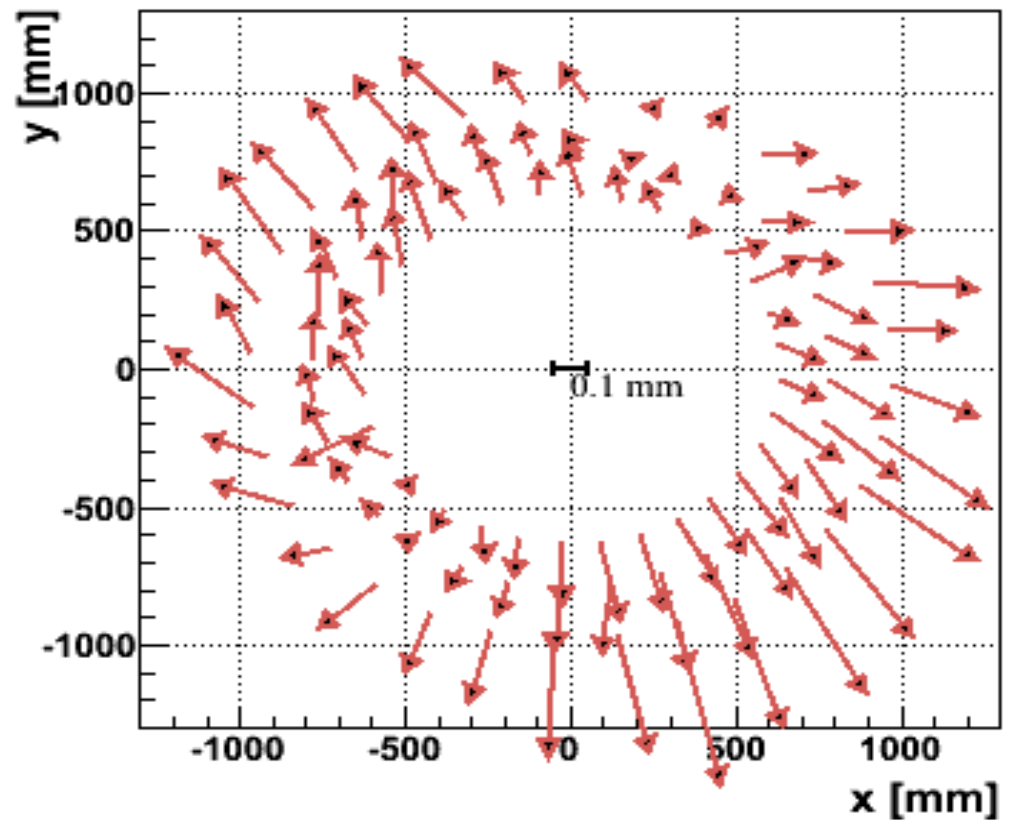
## TRT Only

translation x1000 - Layer 2



## Combined

translation x1000 - Layer 2





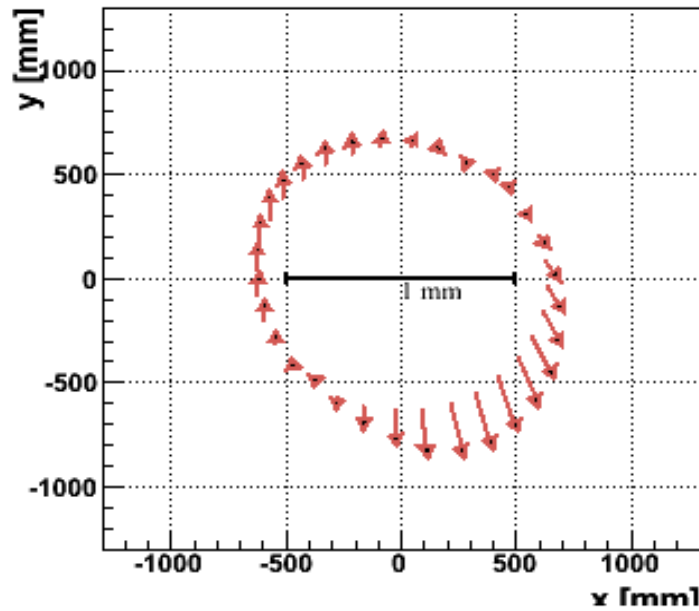
---

Naively monitoring plots give little clue as to which is more appropriate

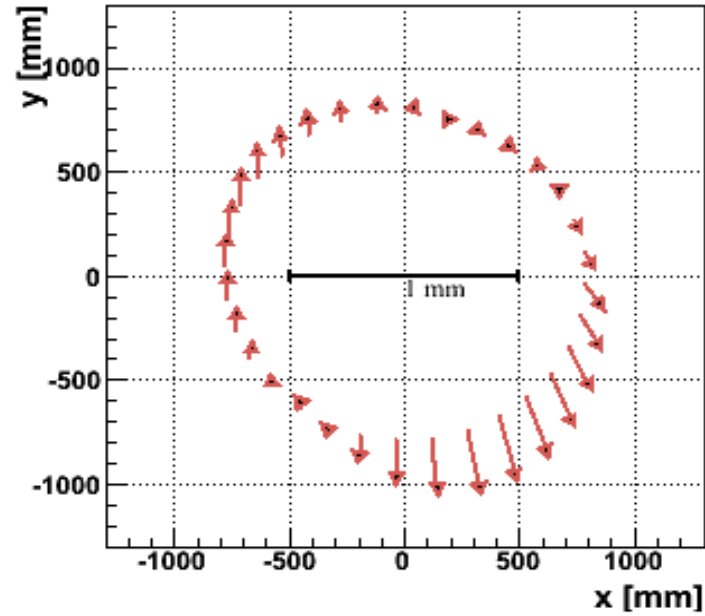


# Difference in alignment parameters

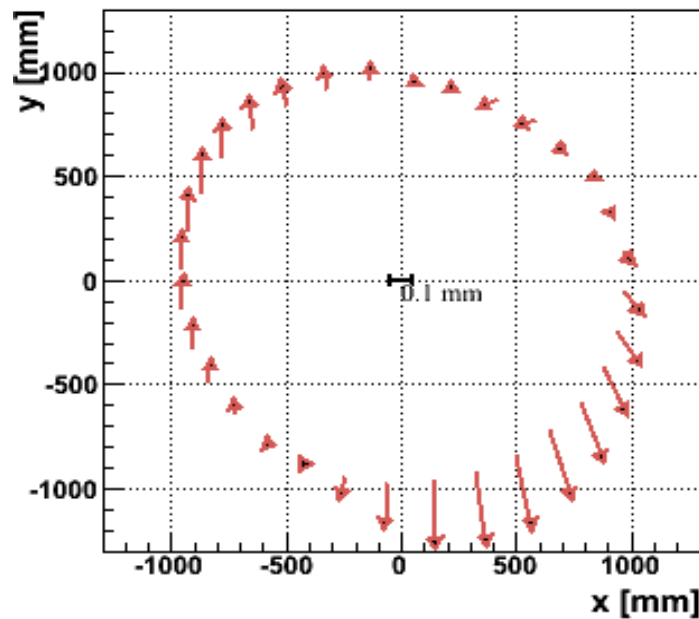
translation x 1000 - Layer 0



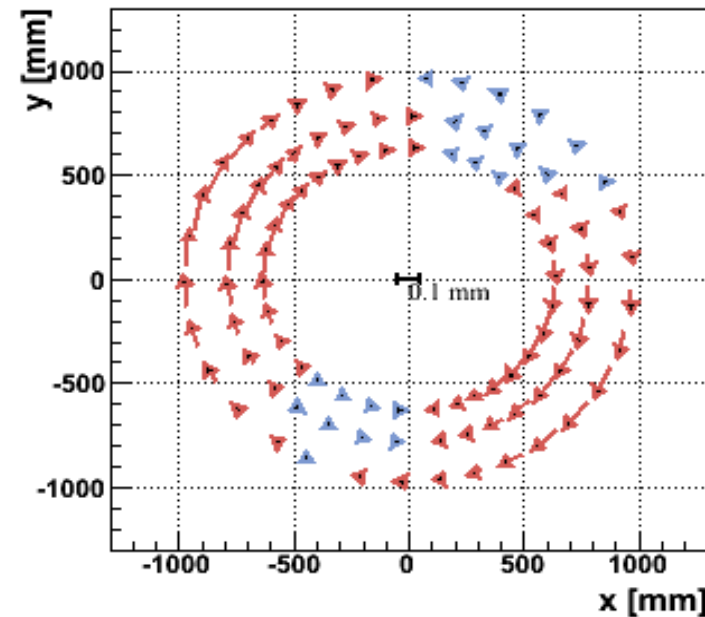
translation x1000- Layer 1



translation x1000 - Layer 2



Projection of the translation along  $\vec{\phi}$  x 1000





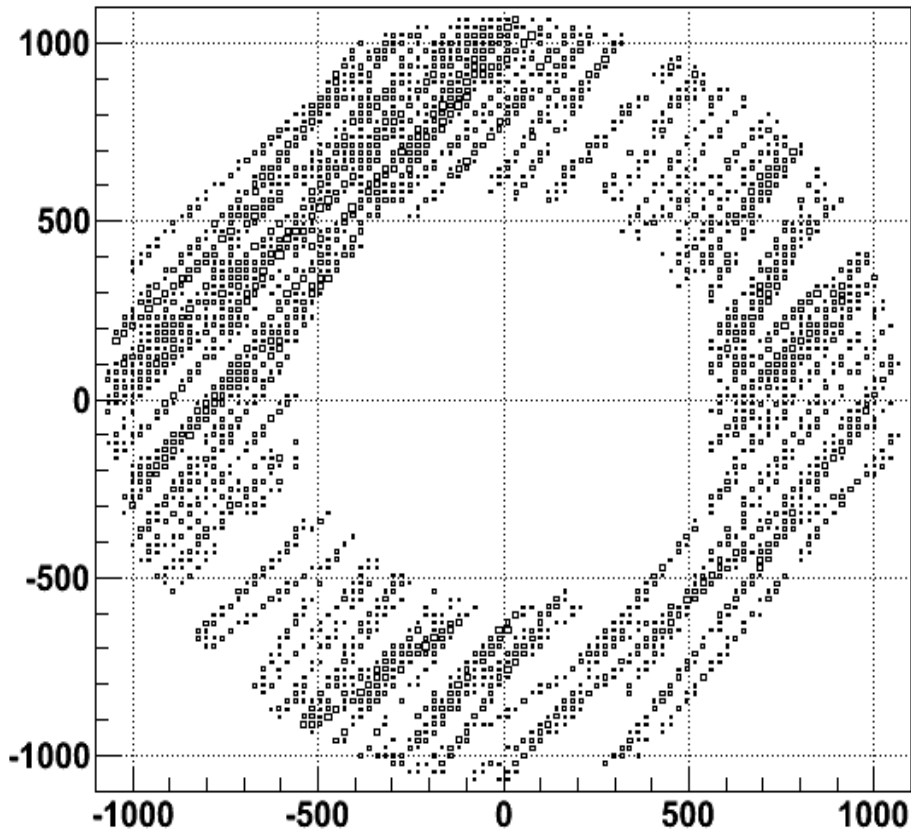
# Track Selection

Increase sensitivity by selecting tracks based on  $\phi_0$

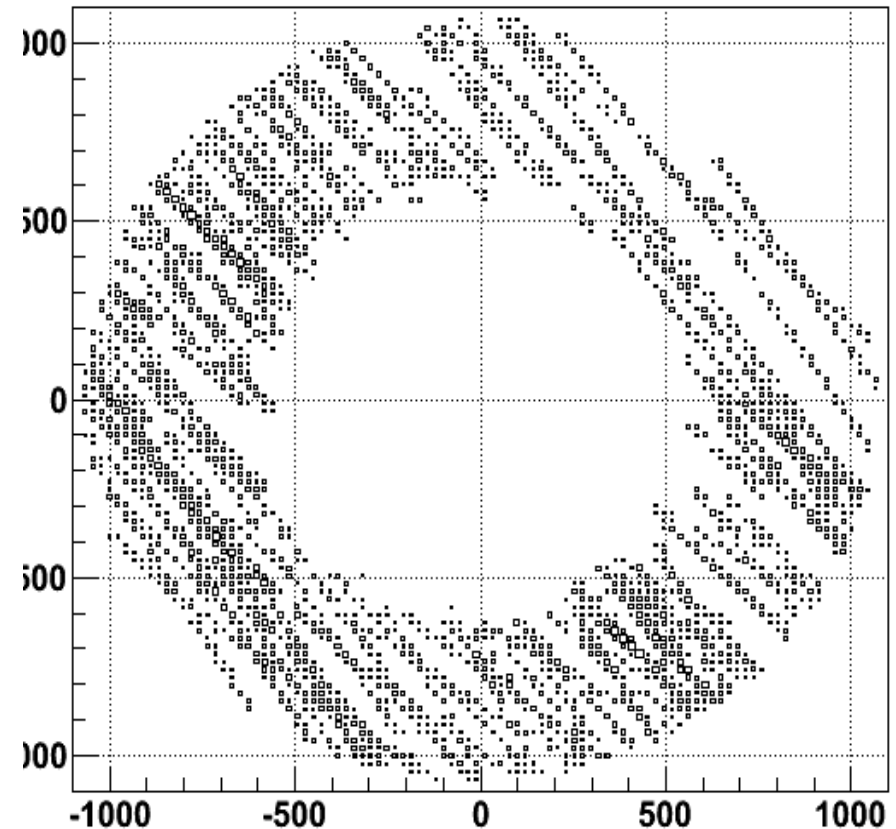
Group A ( $-\frac{5\pi}{6}$  -  $-\frac{2\pi}{3}$ )

Group B ( $-\frac{\pi}{3}$  -  $-\frac{\pi}{6}$ )

Hit Map for Barrel



Hit Map for Barrel





---

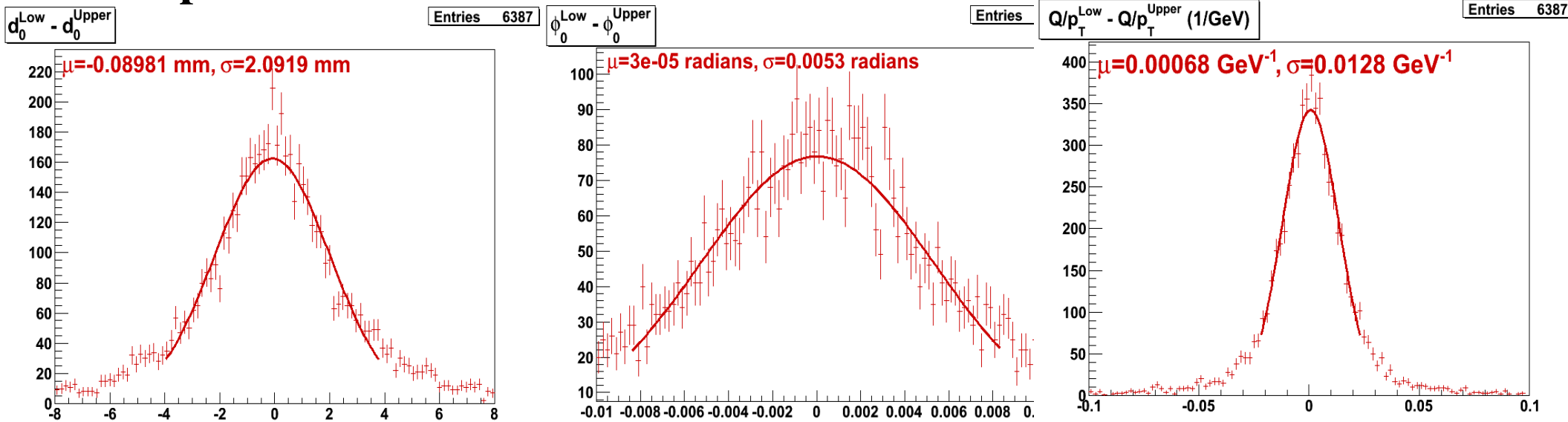
Run reconstruction using  
geometry from L2 alignment with  
combined tracks

Other jobs are still running



# Track Parameters

## Group A



## Group B

